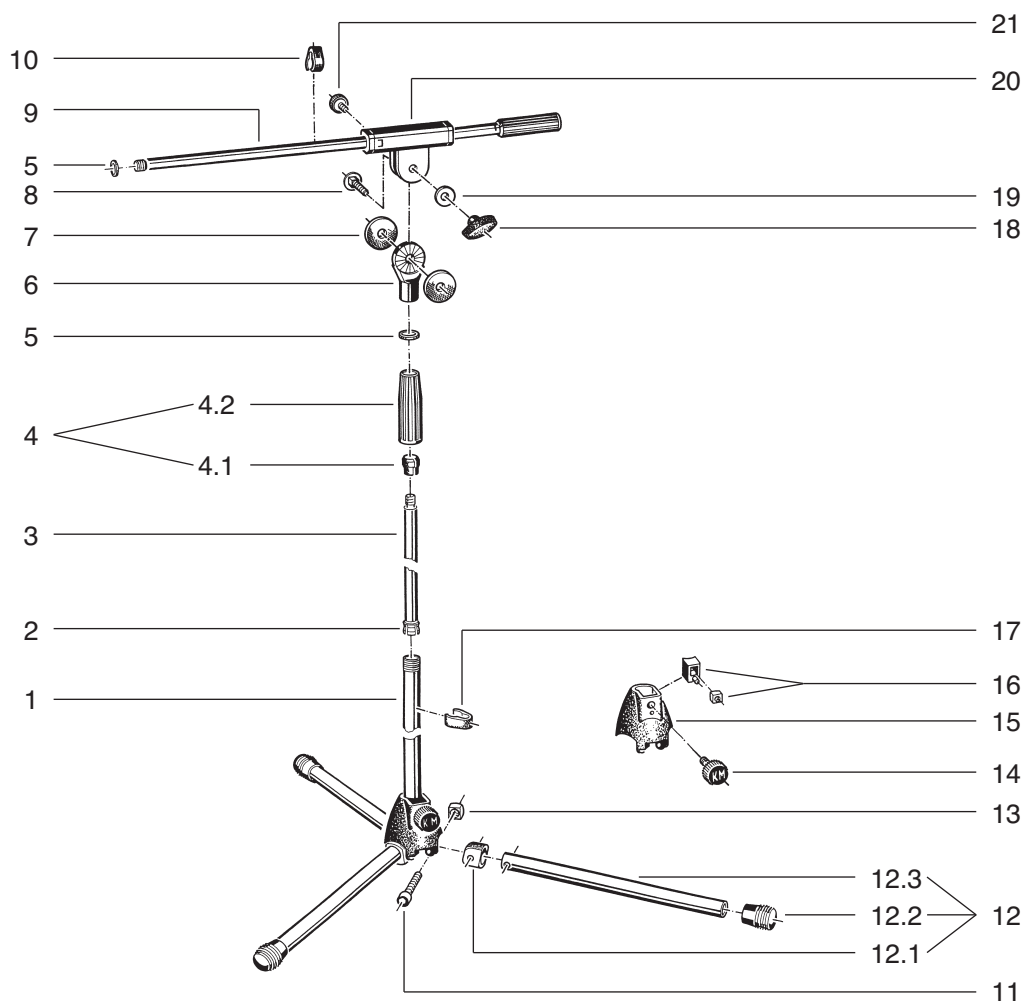


27105 Microphone Stand

27105.300.01 nickel

27105.300.55 black



| pos. | description | art.-no. nickel | art.-no. black | qty |
|------|--|--------------------|-------------------|-----|
| 1 | base rod | 02.75.420.01 | 02.75.420.55 | 1 |
| 2 | plastic stop | 01.85.070.55 | 01.85.070.55 | 1 |
| 3 | extension rod with 3/8" thread | 7.200.030901 | 7.200.030955 | 1 |
| 4 | sleeve assembly complete, consisting of: | 7.200.000555 | 7.200.000555 | 1 |
| 4.1 | plastic ring | 01.86.820.55 | 01.86.820.55 | 1 |
| 4.2 | plastic tightening sleeve | 01.86.920.55 | 01.86.920.55 | 1 |
| 5 | aluminum washer | 03.31.525.00 | 03.31.550.15 | 2 |
| 6 | swivel head | 02.40.430.55 | 02.40.430.55 | 1 |
| 7 | rubber washer | 03.21.160.55 | 03.21.160.55 | 2 |
| 8 | carriage bolt M8 x 30 mm | 03.07.530.25 | 03.07.530.25 | 1 |
| 9 | boom arm with 3/8" thread | 7.270.030801 | 7.270.030855 | 1 |
| 10 | cable holder | 01.85.960.55 | 01.85.960.55 | 1 |
| 11 | allen screw M5 x 45 mm | 03.02.185.00 | 03.02.185.00 | 3 |
| 12 | leg complete, consisting of: | 7.278.000101 | 7.278.000155 | 3 |
| 12.1 | plastic connector joint | 01.87.937.55 | 01.87.937.55 | 1 |
| 12.2 | end cap | 01.84.882.55 | 01.84.882.55 | 1 |
| 12.3 | leg tubing | 02.82.730.01 | 02.82.730.55 | 1 |
| 13 | nut M5 | 03.08.210.29 | 03.08.210.29 | 3 |
| 14 | knurled knob M6 x 20 mm | 01.82.835.55 | 01.82.835.55 | 1 |
| 15 | socket | 01.84.120.55 | 01.84.120.55 | 1 |
| 16 | plastic locking spacer | 6.86642.1.55 | 6.86642.1.55 | 1 |
| 17 | cable holder | 01.85.970.55 | 01.85.970.55 | 1 |
| 18 | ship shaped hand knob M8 | 01.83.980.55 | 01.83.980.55 | 1 |
| 19 | washer | 03.11.525.01 | 03.11.525.01 | 1 |
| 20 | swivel joint | 6.27105.1.55 | 6.27105.1.55 | 1 |
| 21 | knurled knob M6 x 12 mm | 01.82.828.55 | 01.82.828.55 | 1 |